

GENERAL NOTES

1. ALL DIMENSIONS IN METRES UNLESS STATED OTHERWISE.
2. CONTRACTOR SHALL VERIFY DIMENSIONS AND CONDITIONS OF EXISTING CONSTRUCTION BEFORE PROCEEDING WITH HIS/HER WORK

NOTES

1. ALL DETAILS SHOWN ON THIS DRAWING ARE INDICATIVE AND NOT FOR CONSTRUCTION.
2. FOR INDICATIVE PAVEMENT TYPES REFER TO DRAWINGS 08-C-DR-0292 TO 0294.
3. FOR FORECOURT BLOCK PAVING LAYING PATTERNS REFER TO THE EXTERNAL WORKS TECHNICAL EMPLOYER'S REQUIREMENTS.
4. FOR INDICATIVE KERB AND EDGING DETAILS REFER TO DRAWING 08-C-DR-0294.
5. FOR FURTHER SOFT LANDSCAPING DETAILS REFER TO THE PLANTING PLAN, DRAWING 08-LA-DR-0233.
6. FOR FURTHER DETAILS OF THE PROW STEEL FOOTBRIDGE CULVERT REFER TO DRAWING 00-C-DR-0077.
7. FOR FURTHER DETAILS OF THE REPLACEMENT CULVERT REFER TO DRAWING 00-C-DR-0087.
8. FOR DETAILS OF THE DRAINAGE REFER TO DRAWING 06-C-DR-0015.
9. FOR DETAILS OF THE LIGHTING AND ELECTRICAL DUCTING REFER TO DRAWINGS 08-SL-C-0300 TO 0302.
10. FOR ALL RAIL REQUIREMENTS, REFER TO THE GENERAL EMPLOYER'S REQUIREMENTS AND SECTION J - CIVIL ENGINEERING.
11. NO SIGNAGE DETAILS ARE SHOWN. CONTRACTOR TO PROPOSE A SCHEME FOR ALL SIGNS WITHIN THE PLANNING APPLICATION BOUNDARY, EXCLUDING DIRECTIONAL AND ADVANCED DIRECTIONAL SIGNS ON THE ADOPTABLE HIGHWAYS.
12. ALL DIRECTIONAL AND ADVANCED DIRECTIONAL SIGNS ON THE ADOPTABLE HIGHWAYS, AND ALL ADVANCED DIRECTIONAL SIGNS OUTSIDE OF THE PLANNING APPLICATION BOUNDARY, TO BE DONE BY OTHERS.

APPENDIX 1

LEGEND

- PLANNING APPLICATION BOUNDARY
- EXTENT OF ADOPTABLE HIGHWAY
- PUBLIC RIGHT OF WAY (PROW)
- ROAD RESTRAINT SYSTEM
- POST AND RAIL FENCING
- POST AND WIRE FENCING
- HIGHWAY - BITUMINOUS SURFACING (PAVEMENT TYPE 1)
- HIGHWAY - BITUMINOUS SURFACING (PAVEMENT TYPE 2)
- CAR PARK - BITUMINOUS SURFACING (PAVEMENT TYPE 9)
- FOOTWAY - BITUMINOUS SURFACING (PAVEMENT TYPE 3)
- PROW - BITUMINOUS SURFACING (PAVEMENT TYPE 4)
- FORECOURT BLOCK PAVING - RUNNING BOND - GRADED FROM GREY TO BUFF (PAVEMENT TYPE 5)
- ACCESS FOR MAINTENANCE IN FORECOURT BLOCK PAVING - HERRINGBONE BOND (PAVEMENT TYPE 7)
- ROUNDABOUT BLOCK PAVING - HERRINGBONE BOND - CHARCOAL GREY (PAVEMENT TYPE 6)
- DISABLED PARKING BLOCK PAVING - HERRINGBONE BOND - CHARCOAL GREY (PAVEMENT TYPE 7)
- PARKING BAYS - PERMEABLE BLOCK PAVING (SEE DRAWING 06-C-DR-0025 FOR DETAILS)
- RAISED PEDESTRIAN WALKWAY - BLOCK PAVING HERRINGBONE BOND - GREY (PAVEMENT TYPE 7)
- NETWORK RAIL ACCESS (PAVEMENT TYPE 8)
- CELLULAR PAVING SYSTEM
- PROW TIMBER FOOTBRIDGE
- PROW STEEL FOOTBRIDGE
- BUILDING
- CONCRETE EDGINGS
- CONCRETE BULL-NOSED KERBS (BN)
- CONCRETE HALF-BATTER KERBS (HB2)
- CONCRETE SPLAY KERBS (SP)
- CROSSOVER KERB BLOCKS BY HANSON FORMPAVE
- LIGHTING COLUMN
- CCTV CAMERA
- PROPOSED SOFT LANDSCAPE:**
- EXISTING TREE TO BE RETAINED
- EXISTING HEDGEROW TO BE RETAINED
- SPECIMEN TREE PLANTING (SEE DRAWING 06-C-DR-0024 FOR TREE PIT DETAILS)
- HEDGEROW
- WOODLAND BELT
- GROUND COVER
- ORNAMENTAL PLANTING
- GRASS VERGE
- GRASS FOR REPTILES
- SPECIES RICH GRASS
- GRASS FOR WET AREAS
- ATTENUATION BASIN
- VEGETATION TO BE MANAGED AND SEEDED WITH SPECIES RICH GRASS
- MARGINAL PLANTING

KEY PLAN



DRG STATUS	DRG REV	P1
S2	GW	
BY	APVD	APVD
BS	BS	BS
CHK	CHK	CHK
DR	DR	DR
DATE	DATE	DATE
DSGN	DSGN	DSGN

RED HILL HOUSE, 227 LONDON ROAD
WORCESTER WR5 2JG (01905 361 361)

worcestershire
county council

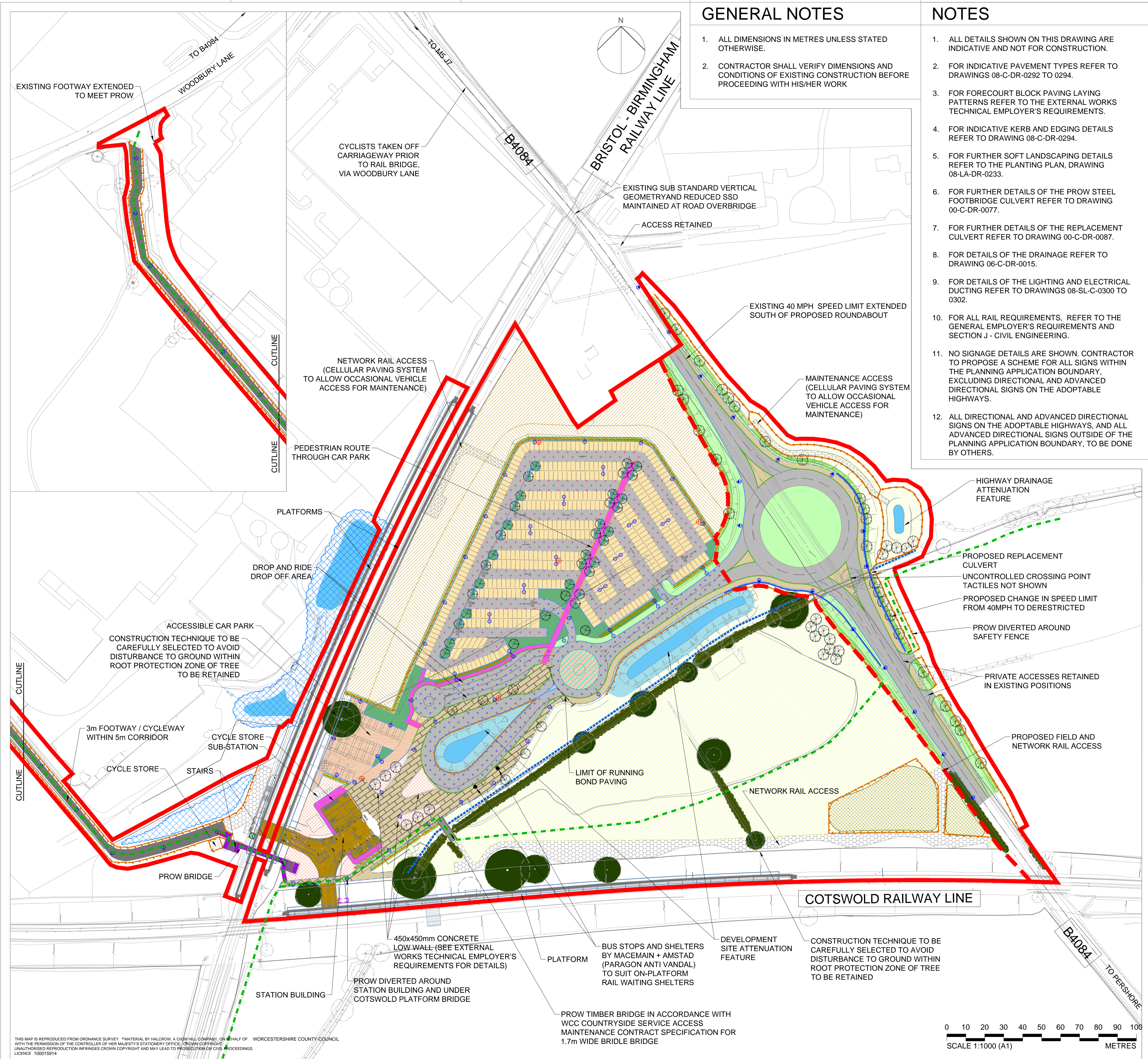
COUNTY HALL, SPETCHLEY ROAD
WORCESTER WR5 2NP

THIS DOCUMENT, AND THE IDEAS AND DESIGNS INCORPORATED HEREIN, IS AN INSTRUMENT OF PROFESSIONAL SERVICE, IS THE PROPERTY OF CH2MHILL AND IS NOT TO BE USED, IN WHOLE OR IN PART, FOR ANY OTHER PROJECT WITHOUT THE WRITTEN AUTHORIZATION OF CH2MHILL.

CH2MHILL

WORCESTERSHIRE PARKWAY
SCHEME PLAN

1:1000
VERIFY SCALE BAR IS 25mm ON ORIGINAL DRAWING. 25mm
DATE 01/06/2016
PROJ 473946.LA.00.08
DWG 08-C-DR-0328
SHEET 1 of 1



THIS MAP IS REPRODUCED FROM ORDNANCE SURVEY MATERIAL BY CH2MHILL, A CH2MHILL COMPANY, ON BEHALF OF WORCESTERSHIRE COUNTY COUNCIL WITH THE PERMISSION OF THE CONTROLLER OF HER MAJESTY'S STATIONERY OFFICE. CROWN COPYRIGHT. UNAUTHORIZED REPRODUCTION INFRINGES CROWN COPYRIGHT AND MAY LEAD TO PROSECUTION OR CIVIL PROCEEDINGS. LICENCE: 100015914

